

design **aspire** home

[CONTRASTING COLOR THEORY]

**NIGHT
AND DAY**

ALSO
CABINS
AND THEIR
SURROUNDING
ECO
SYSTEMS

DESIGN

Olathe, Kansas
58 OVER YONDER
The heartbeat of this home lies in America's heartland

Pacific Heights, California
62 IRONY
Designer Heather Hilliard meets this project squarely on by virtue of her asymmetrical choices

Minnesota
66 EXHIBITION SPACE
Life imitates art inside this Minnesota masterpiece realized by PKA Architecture and interior designer Benigno Aguilar

Stockholm, Sweden
72 THE NONCOMFORMIST
A staircase takes a turn for the better

San Francisco, California
82 PIECE OUT
Jeff Schlarb channels his client's rock 'n' roll sensibility, taking her San Fran home from Victorian to venturesome

Yzerfontein, South Africa
90 BARN SMART
This entrepreneurial couple is at the peak of their game

ON THE COVER PHOTOGRAPHY BY MATTI GRESHAM

Dallas, Texas
96 SHAPE SHIFTER
For Dallas-based designer Ginger Curtis, it's the blend of innovation and comfort that produces the masterful interiors inside this midcentury modern stunner

Bethesda, Maryland
104 REBIRTH
Designer Sara Swabb infuses a home's historic charm with a kicky modern aesthetic, crafting a timeless blend of warmth and personality

Biarritz, France
110 A FINE CALCULUS
It all adds up in Carole Dugelay's Biarritz home

Silicon Valley, California
116 TRICK OF THE TRAD
Jon de la Cruz's incorrigible inner prankster turns the table on tradition at an Atherton family home

Paris, France
122 NATURAL ABILITY
From the grand architecture to the redefined spaces within, this Paris flat is a testament to the power of quiet - an invitation to slow down, reflect and appreciate the beauty of simplicity

IN EVERY ISSUE

34 BOOKNOOK
A curated collection
56 COUP D'OEIL
48 EDITORS' PICKS
128 LAST WORDS
That's a wrap!



66 BENIGNO AGUILAR
This travel-inspired bedroom features a vintage Moroccan pendant and a carved Indian wood headboard. A fur blanket from Fantasia Furs in Vail adds luxury, while curated details evoke a sense of adventure.

Canary Grey

HEATHER HILLIARD
The Organic Sisal in Port by Scalamandré sets the mood in the library. Bookcase by Liaigre.

62



David Duman/Livingston



50

Brooker Helm

MIN DESIGN
A clean-cut corner of the living room. Dot rug from Warli, Living Divani Rodwood sofa, Oki side table from Walter K.



40

Ben Lindbloom

GO'C STUDIO Mazama, WA

Irony

Designer Heather Hilliard meets this project squarely on by virtue of her asymmetrical choices

S

ubtraction is a tricky business; it's so much easier to practice restraint from the start. After all, it's a slippery slope from clean and clutter-free to austerity. Before moving into their new home in San Francisco's Pacific Heights, a busy, young professional couple with a less-is-more style shrewdly turned to designer Heather Hilliard for a cool and restful look.

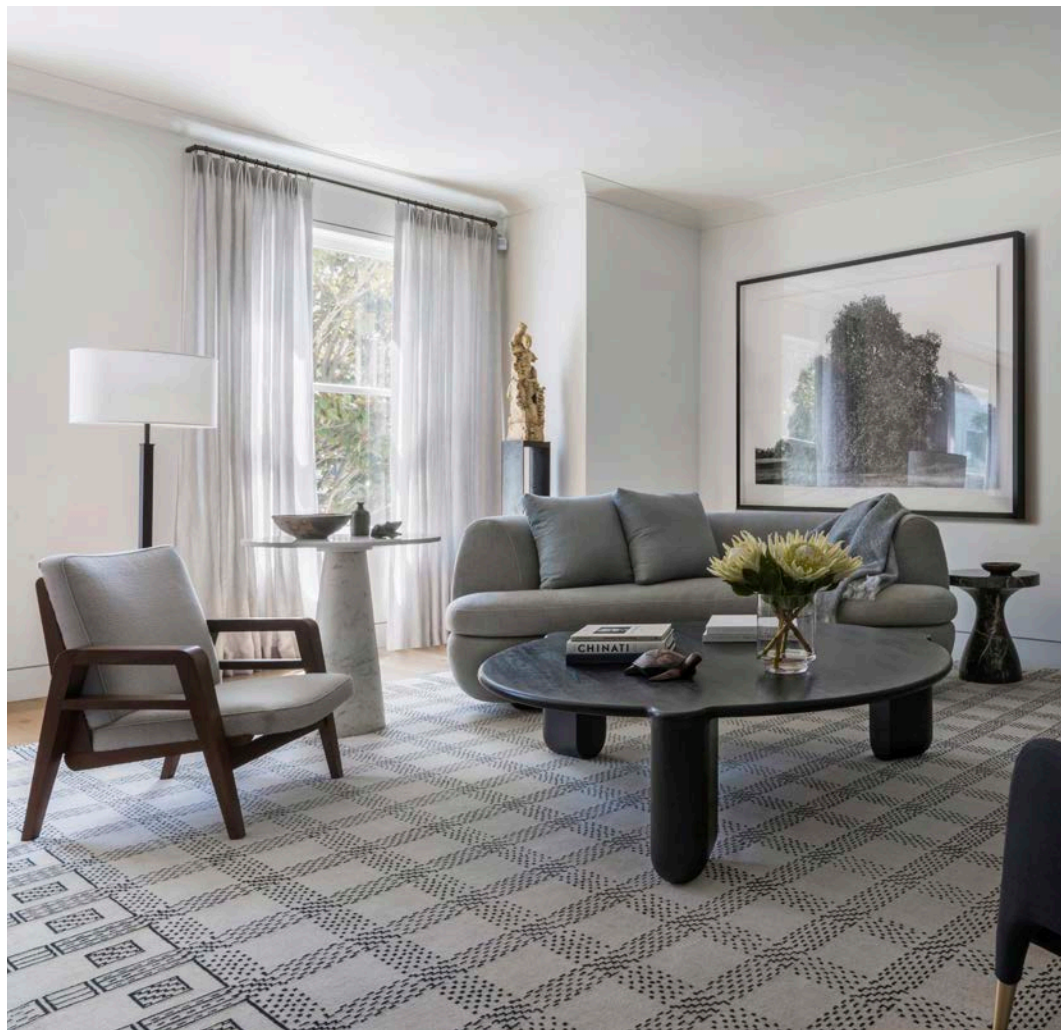
"Establishing furniture plans was the first order of business," shares Hilliard. "From there, we pulled together a mix of vintage and contemporary furnishings and soft, textured solid fabrics for each room. It is rare to find clients without a folder full of Pinterest and Instagram inspiration images. These clients were totally new to the process, but very open to letting us lead. We explained the origin of the vintage pieces, the design intent and materials of the contemporary pieces. The clients were so excited to learn about everything we brought to them."

In the living room, Hilliard opted for an asymmetrical furniture plan, with a floating curved sofa and chairs arrayed around the coffee table. "We selected furniture in different wood finishes to ensure the room felt layered and collected over time – warm walnut on the frame of a vintage chair, ebonized oak on the coffee table and cerused oak with exposed, open grain on a contemporary chest." The upholstered pieces are dressed in linen, bouclé, woven wool and soft alpaca in light- and dark-gray hues.

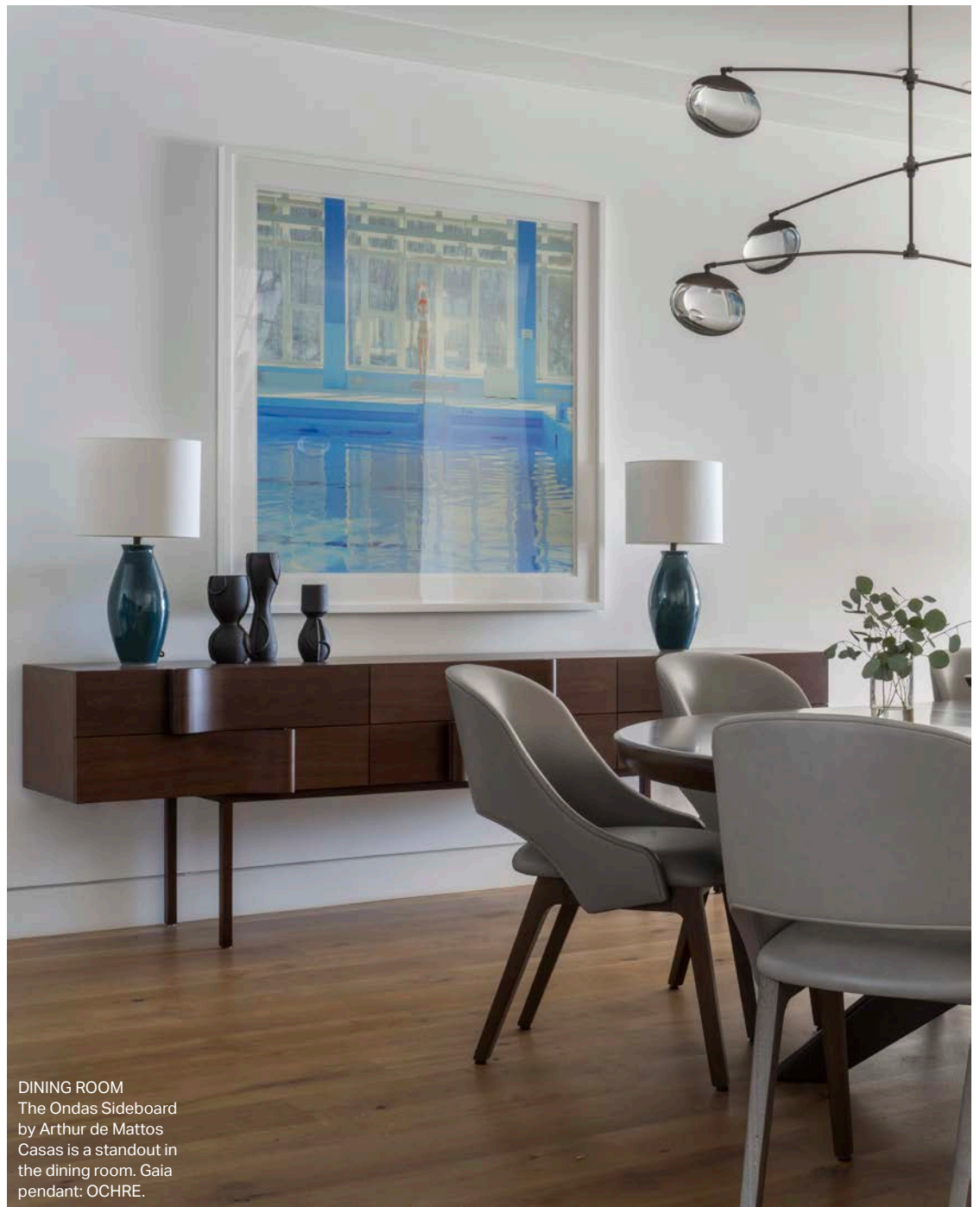
LIVING ROOM

With the furniture floating freely, the living room possesses a special spaciousness. Decca Sofa: Dmitry & Co. Bagatelle area rug: Holland & Sherry.

In the upstairs entertainment room – which opens to outdoor spaces on both sides – the chairs and sofa are positioned to optimize the view of the Golden Gate Bridge on one side and a city vista on the other. Shades of gray and white combine with earth tones to create a relaxing atmosphere in this sunlit space. Curvaceous Perla chairs from midcentury designer Guglielmo Veronesi contrast appealingly with the Howard V Sectional Sofa by Egg Collective. A mighty Nove Sconce by Gregorius Pineo arcs dramatically over this ensemble, which rests on an area rug from Mark Nelson Designs. The library – a primary request of her clients – is keyed to a warmer mode, with a port-colored, Organic Sisal wallpaper by Scalamantré. A vintage area rug in shades of gray links the space tonally to the palette expressed elsewhere in the home. With its slightly flared arms and substantial seat cushion, the Cocoon Armchair by Frag is the perfect place to plop down and read.



“WE
SELECTED
FURNITURE IN
DIFFERENT WOOD
FINISHES TO
ENSURE THE ROOM
FELT LAYERED
AND COLLECTED
OVER TIME.”
HEATHER HILLIARD



DINING ROOM
The Ondas Sideboard
by Arthur de Mattos
Casas is a standout in
the dining room. Gaia
pendant: OCHRE.

THE UPHOLSTERED
PIECES ARE DRESSED
IN LINEN, BOUCLÉ,
WOVEN WOOL AND
SOFT ALPACA IN
LIGHT-AND DARK-
GRAY HUES.

ENTERTAINMENT
ROOM

The entertainment room is grounded by a Mark Nelson rug. Bluff Coffee Table by India Mahdavi through Ralph Pucci.

Throughout the home, accessories, art and decorative pieces appear in sympathetic proportion to the furniture. A Gaia pendant by OCHRE, with large, water-droplike forms dripping off slender stems, hangs above the table in the dining room. A large-format, black-and-white image by British photographer Richard Learoyd hangs in the living room; a Bolzano table lamp by Vaughan sits on a Jean de Merry commode nearby. In the entertainment room, a large baba basket, handwoven in Ghana, rests on the floor, and a color photograph from Alec Soth's *Niagara* series hangs above the sectional.

It's not easy hitting a happy medium. One person's "little" is another's "too much." But when enough is enough, it's magic.

